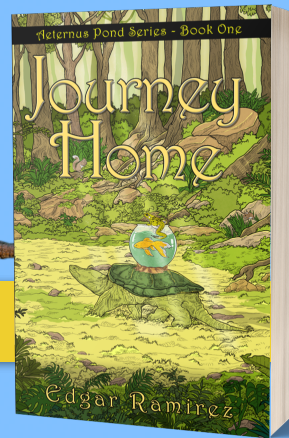


JOURNEY HOME

BY EDGAR RAMIREZ



EDUCATORS GUIDE

ABOUT THE BOOK

"Journey Home" is an enchanting tale of friendship, bravery, and resilience. Follow a young goldfish faced with an impossible choice: either find a new home or succumb to the deadly pollution of his pond. Teaming up with his loyal friends, a brave turtle and a determined frog, they embark on a daring and perilous journey to the fabled Aeternus Pond. This heartwarming adventure takes you on a rollercoaster ride of emotions as they encounter challenges and forge new friendships. Join them as they prove that together, they can overcome any obstacle and discover the true meaning of home. "Journey Home" will captivate readers of all ages, leaving them with a profound appreciation for the power of friendship and the strength that comes from facing adversity.

DISCUSSION QUESTIONS

1. Who was your favorite character and what about them did you connect with?
2. Choose a character and describe what characteristics they embody that you admire most.
3. What do readers learn about Meadow and Sheldon's personalities, during their first meeting with William the owl?
4. What do you think was the most difficult obstacle they had to overcome and how would you have approached it differently?
5. What evidence is there indicating how pollution has affected the pond and its inhabitants?
6. Describe a time when you needed help and you thought up a creative way to solve your problem.

EXTENSION ACTIVITIES

CHARACTER COLLAGE - When reading a new book, it can be helpful to keep track of the characters introduced throughout the story. A character collage is a good way to do this. Working in pairs, students should write down the names of the characters along with a brief description and their role in the story. This activity can be done with computers and internet clipart. Have the students search for images of how they think these characters might appear. Print and paste these onto a large piece of paper (or into PowerPoint or a similar computer program). Students should then label each character and find a quote about them from the book – either a description of the character or something they said. This line should be written underneath each character's picture. This activity is good for keeping the characters straight and can be a lot of fun when students start comparing their visualizations of the different characters.

LEARNING ABOUT POND LIFE - Create a Venn diagram comparing and contrasting each pond creature. Explain the differences between reptiles and amphibians, and the life cycles of each creature.

ABOUT THE AUTHOR

Edgar Ramirez is a captivating storyteller, originally from New York City, currently residing in Livingston, New Jersey. Nature holds a special place in Edgar's heart and serves as a significant theme in his storytelling. As a youngster, Edgar would often venture off on solitary nature walks. Whether meandering through sand dunes by the seashore or wandering the lush woodlands surrounding a tranquil lake, he would immerse himself in the sights and sounds of the natural world. These awe-inspiring experiences became a wellspring of inspiration for his stories, infusing them with the beauty, mystery, and harmony found in nature. Step into Edgar's enchanting world, Aeternus Pond, where imagination takes flight and the wonders of nature come alive. With each story he weaves, Edgar sparks the imagination, instills a love for reading, and leaves readers longing for more.